



**Humber and North Yorkshire**  
Health and Care Partnership  
Humber Acute Services Programme

# We want to hear from you

Summary Report of our Findings

Humber Acute Services Programme

## Integrated Impact Assessment

*Engagement with Maternity Service Users in  
Lincolnshire to understand the potential impacts of  
change*

December 2022



# Background

The Humber Acute Services Programme is looking at how to provide the **best possible hospital services** that **meet the needs of local people** now and in the future.

Areas in scope include **Maternity, Neonatal and Paediatric Care, Urgent and Emergency Care and Planned Care and Diagnostics.**

We know that a number of women and birthing people from Lincolnshire County Council area **travel to Grimsby and Scunthorpe** each year to give birth. The Programme team undertook a series of engagement events across Lincolnshire to **understand what the potential impacts of change** could be for women and their families in these communities to help inform the Integrated Impact Assessment.

## What is an Integrated Impact Assessment? (IIA)

An Integrated Impact Assessment is a tool to **help us understand how different changes could potentially impact different people and different groups of people**, both positively and negatively.

Our assessment looks at **six different areas:**

- **Patient experience**
- **Patient safety**
- **Effectiveness**
- **Equality**
- **Workforce**
- **Sustainability**

Bringing all the evidence together in this way helps decision-makers to see **how different options could affect different groups of people** and help identify appropriate mitigations to any negative impacts.

**The Equalities Impact Assessment** element considers how changes could impact on people with **protected characteristics under the Equality Act**, such as **race, religion, or sexual orientation**, and also looks at populations who face additional barriers to accessing healthcare for a variety of reasons, such as **poverty or rural isolation.**



# Context – the East Lindsey Population

Each year approximately **539 women and birthing people** travel from Lincolnshire County Council area to give birth at **Diana Princess of Wales Hospital, Grimsby (DPoW)** and approximately **55 travel to Scunthorpe General Hospital** to give birth.

For some people, these **journeys are longer** than if they had chosen to give birth at their nearest hospital, (*Boston Pilgrim Hospital, Lincoln County Hospital*). However, for many communities in the East Lindsey district, DPoW is their nearest hospital. Approximate travel distances are displayed in the table below:

	Diana Princess of Wales	Scunthorpe General Hospital	Pilgrim Hospital, Boston.	Lincoln County Hospital
Mablethorpe	30.6 miles	53.4 miles	31.1 miles	41.9 miles
Binbrook	10.1 miles	27.8 miles	36.1 miles	24.5 miles
Louth	13.8 miles	37.8 miles	31.3 miles	26.3 miles
Skegness	38.1 miles	60.3 miles	20.7 miles	41.8 miles



Parts of Lincolnshire's coastline, particularly Skegness and Mablethorpe, are among the **most deprived areas in England**.



East Lindsey has an **unemployment rate of 5.6%** compared to UK national average of 3.8% and **16.2% of the population are classed as income deprived**.



**17.8%** of women and birthing people from East Lindsey are **smoking at the time of booking** (*when they attend their first antenatal appointment.*)



In 2020 **under 18 conception rates in East Lindsey were 16.9%** compared to 13% nationally.



**13.6% of households in rural parts of East Lindsey** do not have a car. In **urban parts of East Lindsey** even fewer people own a car (**29.4%**), in **Central Mablethorpe 36.9%** of people **do not have access to a car**.

# What we did

Using patient activity data, we identified **key communities where** women and birthing people from the Lincolnshire County Council area are travelling to give birth at a hospital in the Humber, specifically **Diana Princess of Wales Hospital, Grimsby (DPoW)**.

They communities identified included:

- **Mablethorpe**
- **Binbrook**
- **Louth**
- **Skegness**

Throughout **October – December 2022** we visited children's centres and antenatal clinics at all four locations to speak with new and expectant families about what the potential impacts of change could be.



**33 new and expectant parents took part**

**15 had given birth, or were planning to give birth at DPoW**



# Who took part

We spoke to:

- **20** women in **Skegness**
- **4** in **Louth**
- **3** in **Binbrook**
- **6** in **Mablethorpe**

This equates to a response rate of 6.1%

All of the women we spoke with were **either currently pregnant, or had recently given birth.**



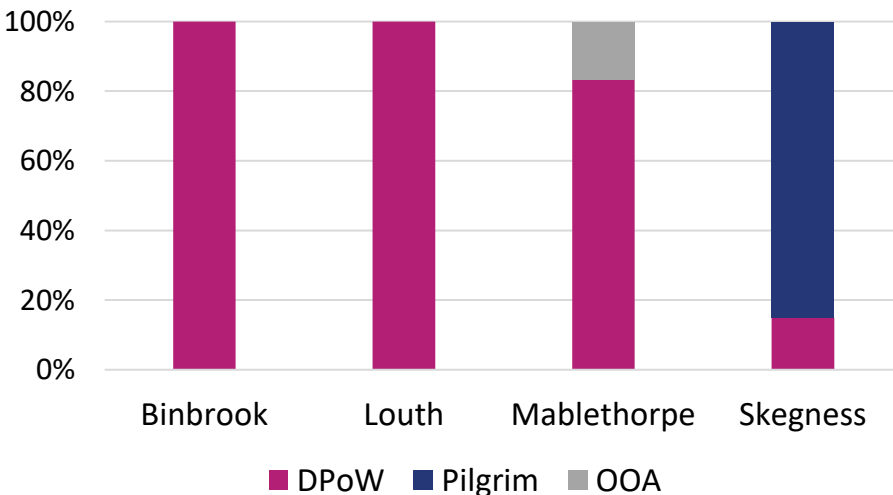
100% of participants were currently or recently pregnant

Around half (45.5%) had given birth at DPoW

**45.5% (15)** of those we spoke with **had used maternity services at DPoW** in the last two years to give birth, or were planning to use maternity services at DPoW in the near future.

**54.5% (18)** of those we spoke with **had not used maternity services at DPoW** and had given birth at another hospital or location. Almost all (17) of whom used the services at **Pilgrim Hospital, Boston** instead.

### Birth location by community



**85% (17)** of those we engaged with **in Skegness** had used **Pilgrim Hospital, Boston.**

**15% (3)** of those we engaged with **in Skegness** had chosen to **travel to DPoW** despite the further distance.

**1 person (3%)** we spoke with had used maternity services at another hospital out of area but would **100% consider DPoW in the future.**

# What they told us: Case Studies

## Respondent 1:

Female, lives in Mablethorpe, aged 25-34, doesn't own her own car, mother to other children aged 2-18 years.

*"Choice would be taken away; Scunthorpe is too far away, especially when thinking of getting my other children looked after. The roads to Boston are poor with lots of tractors, train lines and diversions making the distance even longer. I'd have to give birth at home, which is the last thing I want to do as the thought fills me with dread, but I would have no other choice."*

## Respondent 2:

Female, lives in Skegness, aged 16-24, mother to other children aged 2-18 years.

*"I wouldn't consider Grimsby as it's not the closest hospital to where I live."*

## Respondent 3:

Female, lives in Louth, aged 25-34, owns her own car, mother to one child.

*"It would be really difficult for me, I would have further to travel and visitors/family would struggle to come visit me. My next nearest hospital is Lincoln, but that has an awful reputation. Public transport is poor, especially in rural locations. It would be awful"*



# What they told us: (continued)

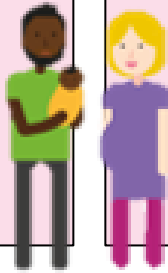
15 women and birthing people said 'Yes' they had used maternity services at DPoW, or were currently pregnant and planning to use them.

This was why...

"Private rooms"

"Closest hospital to home"

"Grimsby has a really good reputation"



18 women and birthing people said 'No' they had not used maternity services at DPoW, but had birthed somewhere else.

This was why...

"Boston Hospital is closer"

"Never considered Grimsby as it's too far away"

"It's got a good reputation, and I had my other children there (Boston)"

Not everyone we spoke to told us how they did/would travel to the hospital to give birth.



Of those that did, almost **69% (11)** said they travelled by car (personal) and **31% (5)** said they were driven in a friend or family member's car.

Overall, the majority of women we engaged with said that if they were to have another child they would **certainly** choose to birth at DPoW.

Unlikely

2

Possibly

1

Likely

3

Certain

9



On average, the women and birthing people we engaged with **rated their experience** of accessing hospital services in DPoW as **8 out of 10**



# What they told us: (continued)

All the women we engaged with were asked **what the impact(s) would be** on them individually, but also their families **if for any reason they were unable to give birth at DPOW in the future.**

**Key themes** from the feedback received included:

*(Please note - A full list of anonymised comments are available on request)*

## Travel

“All the other alternatives would be too far to travel”

“I would find the extra travel stressful”

“The roads to Boston are poor and all the alternatives are congested with tractors and trainlines”

## Safety

“In an emergency, the extra travel could have poor outcomes”

“there would be a huge impact on my birthing experience and wellbeing of my baby”

“I have a lot of trust in the Grimsby and the staff there”

## Choice

“I feel my choice would have been taken away”

“I would have to choose a hospital that I know is not as good as Grimsby”

“I wouldn't know where else to go”

## Home Birth

“I would probably choose to give birth at home”

“Would have no choice but to give birth at home, But wouldn't feel comfortable giving birth without medical help on hand”

## Caring Responsibilities

“I would struggle to get childcare for my other children after I've given birth”



# Next Steps



## How will your feedback be used?

The feedback we have gathered throughout our engagement with women and birthing people across Lincolnshire will be used to **update the Programme's Integrated Impact Assessment (IIA)** and help decision-makers see **how different options could affect different groups of people and communities**.

Along with our **Pre-Consultation Business Case (PCBC)** the IIA will form part of the **final assurance** that we need to go to **formal public consultation** next year.



## What is a Pre-Consultation Business Case?

A Pre-Consultation Business Case (PCBC) is an important document that we need to produce if we want **to make changes to how we deliver services**.

It sets out the **challenges** we are facing – the **reasons why** we need to make changes – and what the **possible solutions** might be to address those challenges. It will also provide information about the **impact** of different possible solutions against a range of measures.

The Pre-Consultation Business Case is the document that enables decision-makers to decide if they would go ahead with **consulting the public and other stakeholders** on how services might be delivered in the future.



## What are the timescales?

We are planning to **complete our Pre-Consultation Business Case in early 2023**, with the aim of **formally consulting** with the public and other stakeholders on potential changes to hospital services **in summer 2023**.

To ensure our consultation approach meets **best practice** guidelines, we are working with **specialist agencies**, including the Consultation Institute, to provide **independent advice and support**.

# Keeping in touch

You can keep up to date with the ongoing work of the Humber Acute Services Programme, and any future involvement opportunities by contacting us using any of the methods below:



Email: [hasr@humberandnorthyorkshire.org.uk](mailto:hasr@humberandnorthyorkshire.org.uk)



Website:

[www.humberandnorthyorkshire.org.uk/humber-acute-services-review](http://www.humberandnorthyorkshire.org.uk/humber-acute-services-review)



Telephone: 03033 303544



Newsletter:

Please scan the QR code below to subscribe or email [hasr@humberandnorthyorkshire.org.uk](mailto:hasr@humberandnorthyorkshire.org.uk)



Scan me!